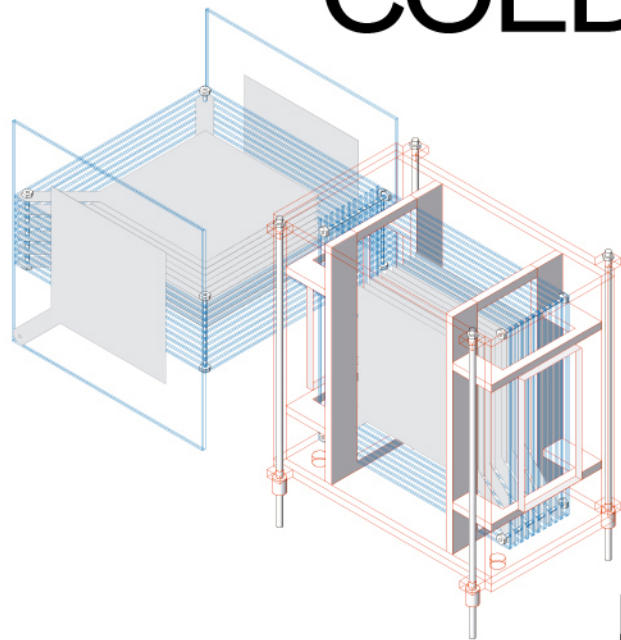
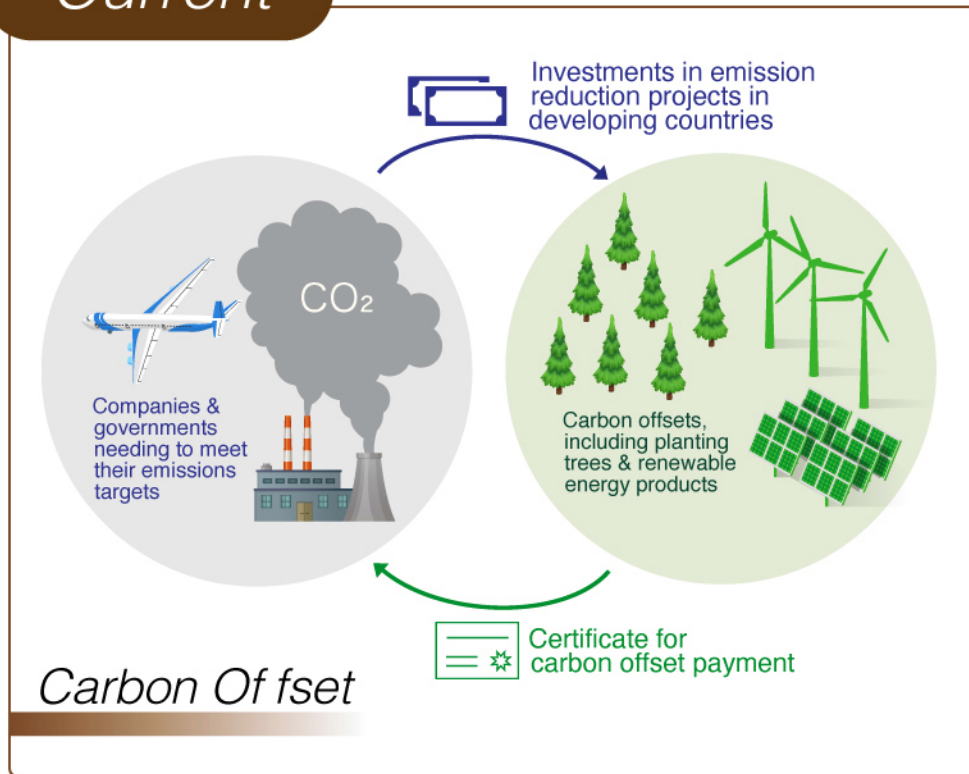


Carbon Offset ➤ Carbon transformation

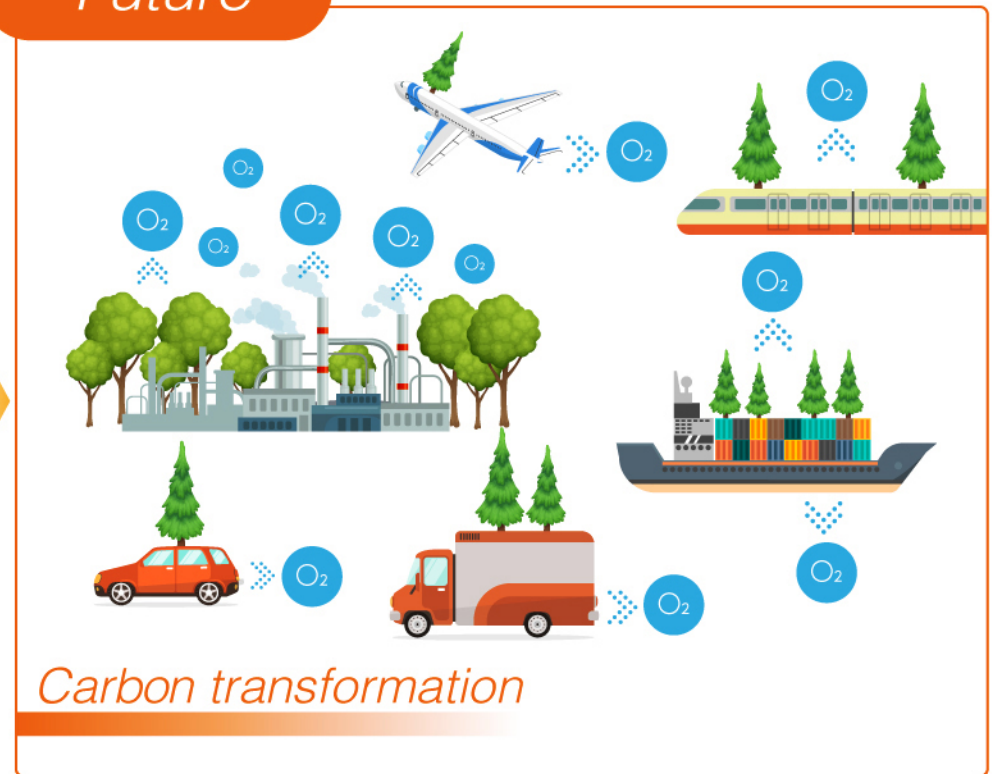
# CO<sub>2</sub> Decomposition COLD PLASMA-FILTER TECHNOLOGY



## Current



## Future

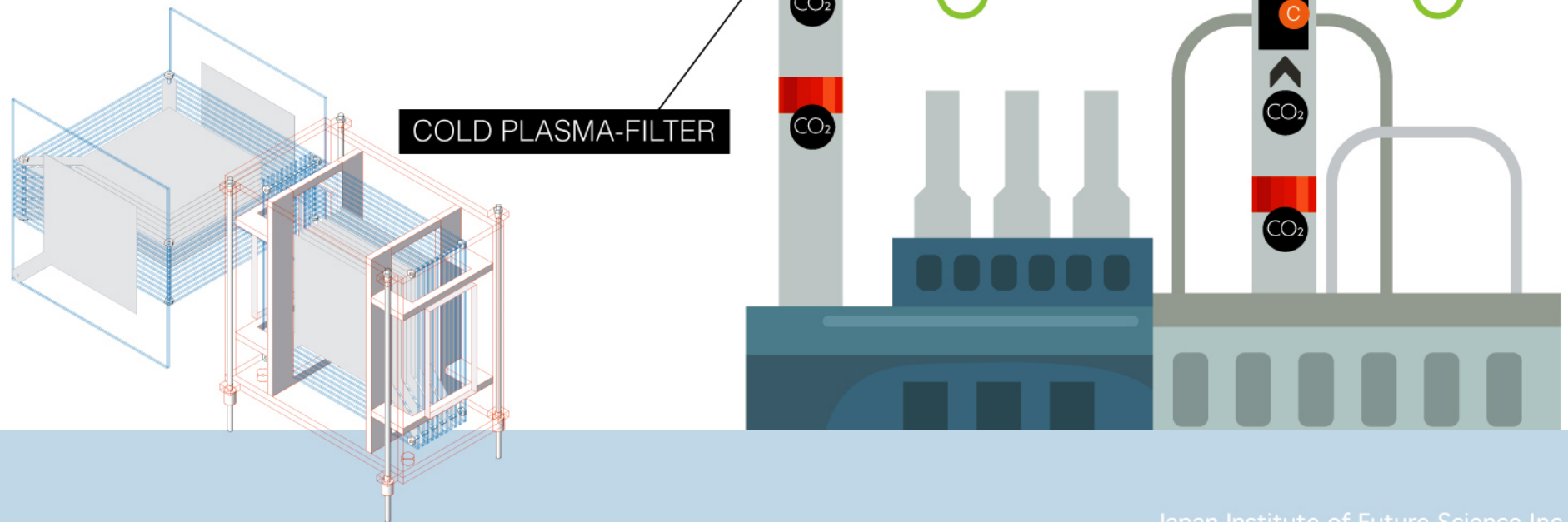


- Our cold plasma technology converts carbon dioxide into oxygen.
- Deployment of “COLD PLASMA FILTER” technology will enable fossil fuel-powered vehicles to assume the role of trees and forests.

# Mechanism

## Separation of oxygen and carbon from carbon dioxide gas

A “COLD PLASMA-FILTER” installed in the factory flue dissociates the molecules of the emitted carbon dioxide gas into oxygen and carbon with only the oxygen discharged into the environment.



# Mechanism

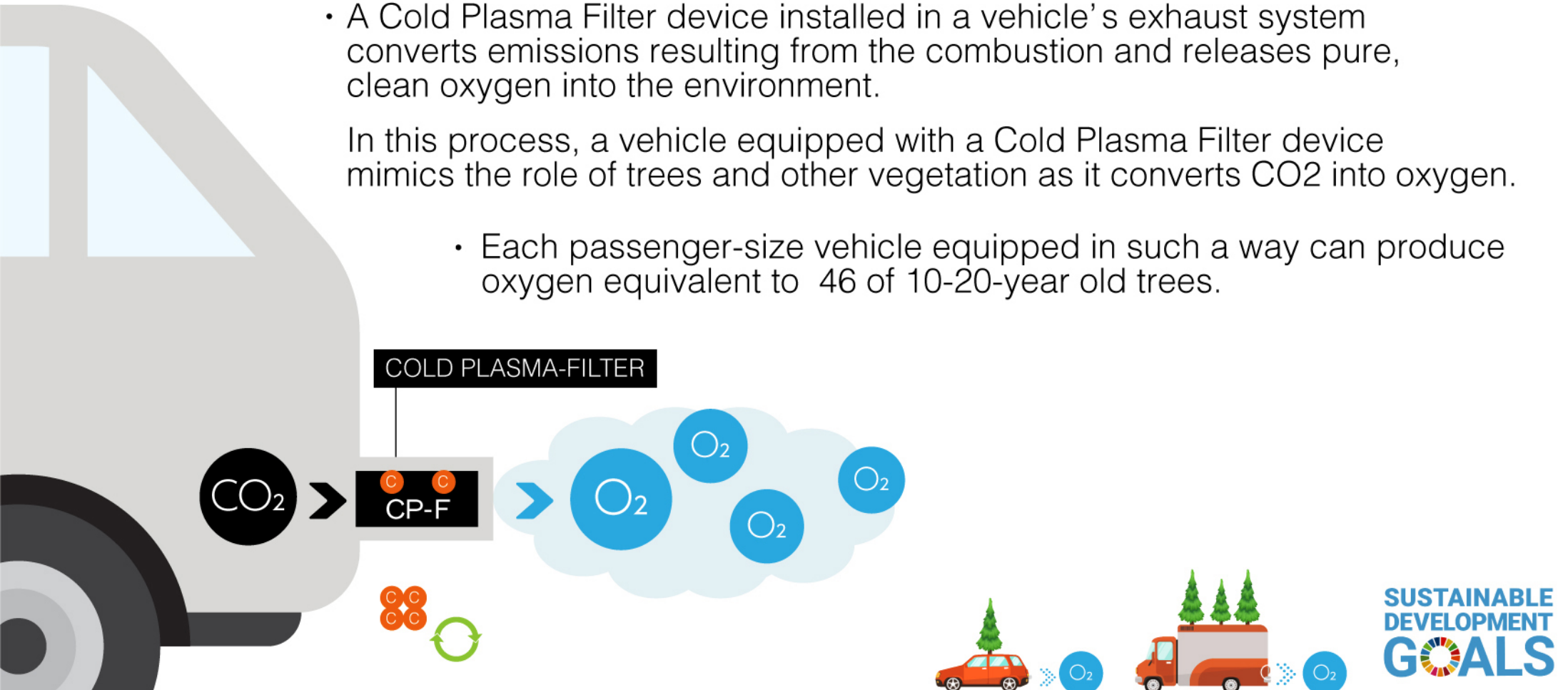


## “COLD PLASMA-FILTER” Equipped Vehicles Mimic Trees

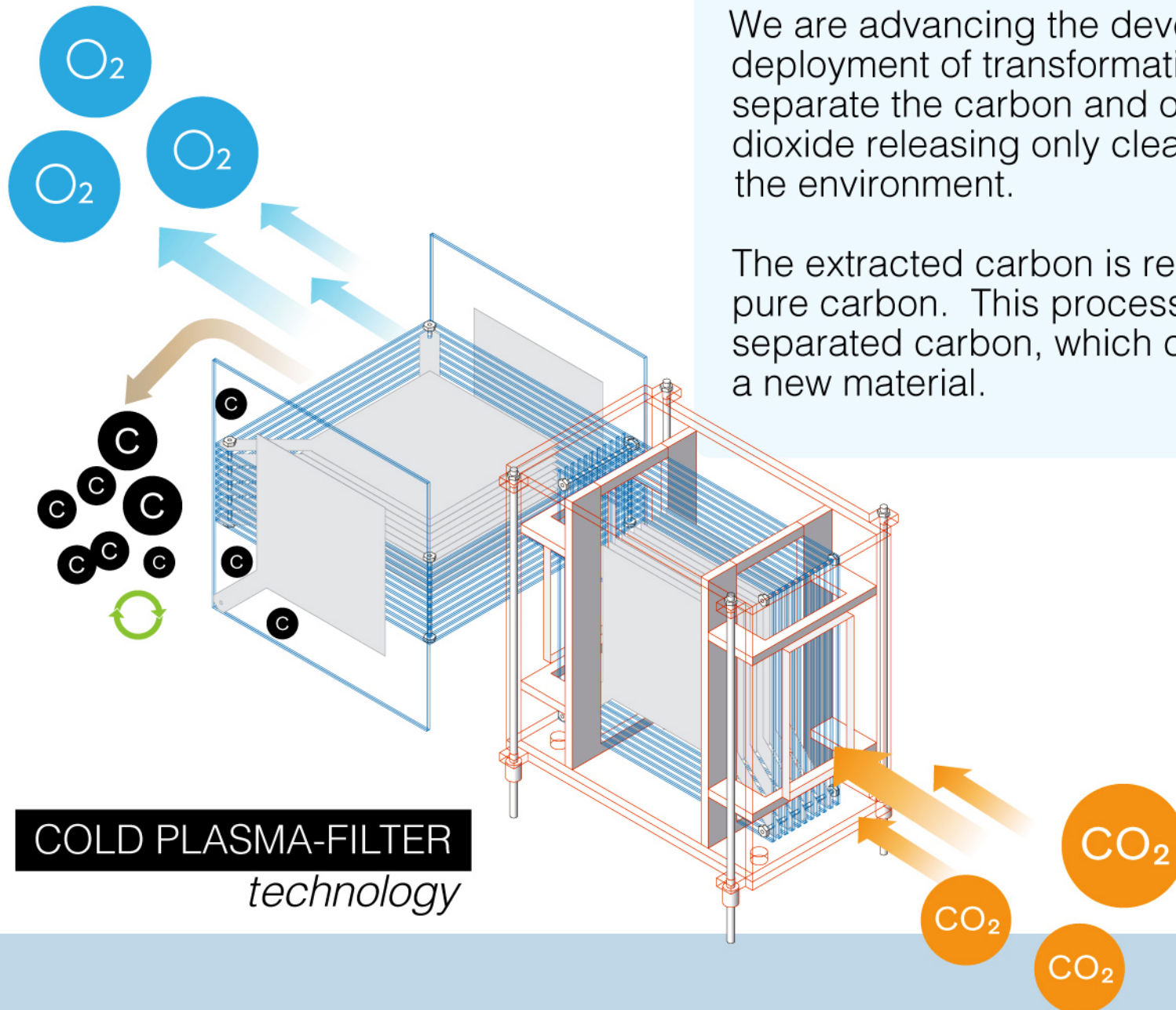
- A Cold Plasma Filter device installed in a vehicle's exhaust system converts emissions resulting from the combustion and releases pure, clean oxygen into the environment.

In this process, a vehicle equipped with a Cold Plasma Filter device mimics the role of trees and other vegetation as it converts CO<sub>2</sub> into oxygen.

- Each passenger-size vehicle equipped in such a way can produce oxygen equivalent to 46 of 10-20-year old trees.



# Mechanism

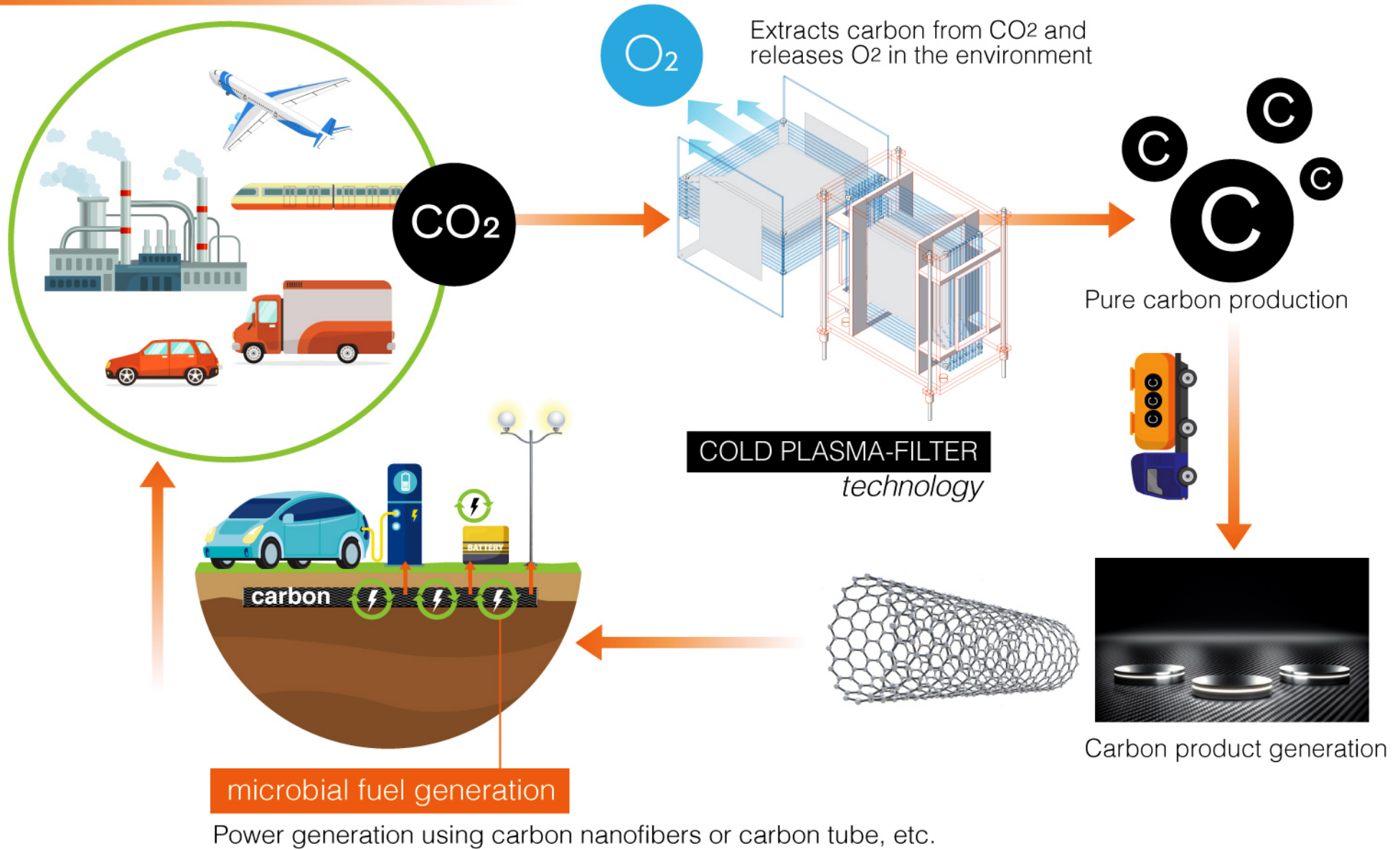


We are advancing the development and deployment of transformative technologies that separate the carbon and oxygen of carbon dioxide releasing only clean, pure oxygen into the environment.

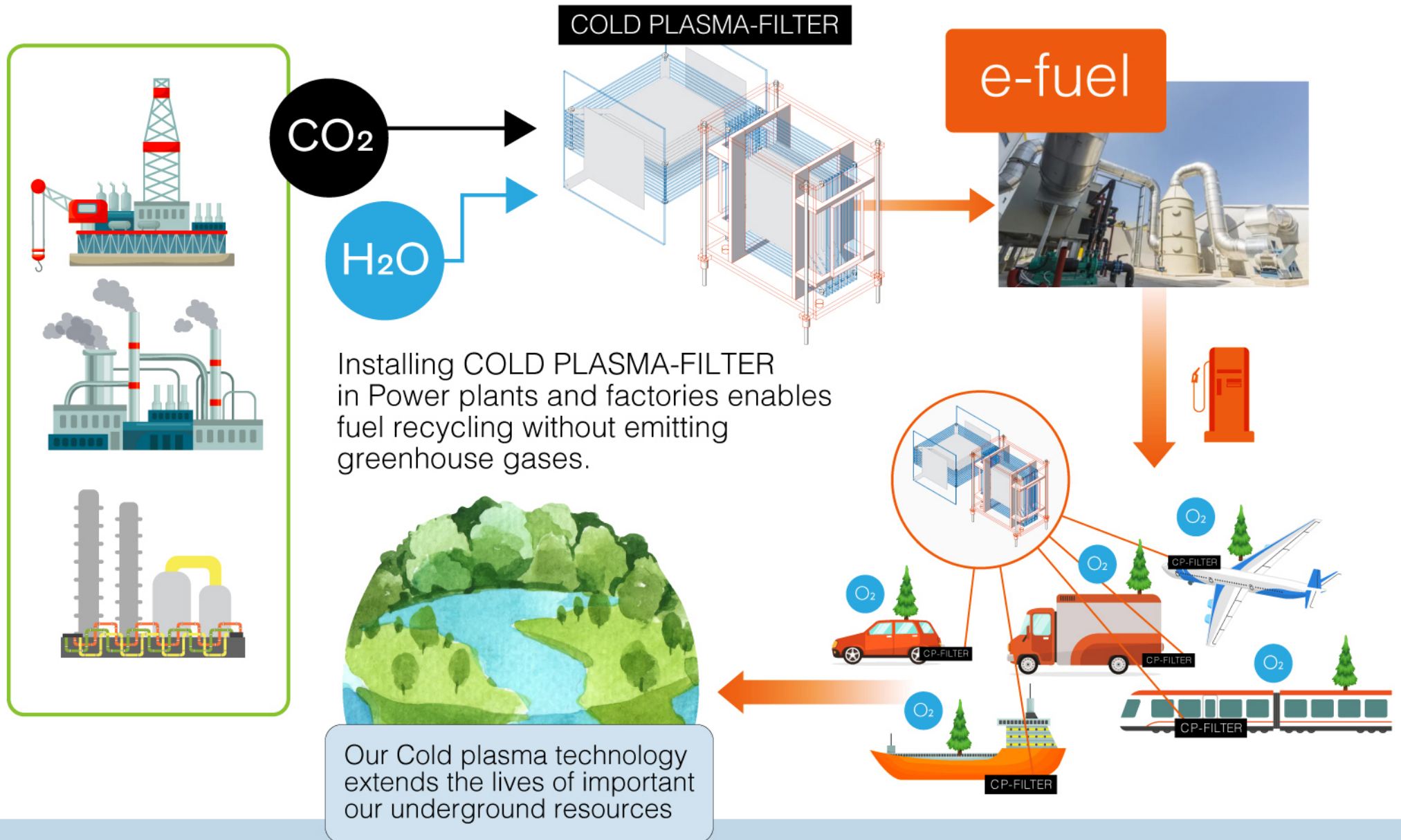
The extracted carbon is recycled for use as pure carbon. This process cleanses the separated carbon, which can then be used as a new material.

**COLD PLASMA-FILTER**  
*technology*

# Carbon Transformation System :1



# Carbon Transformation System : 2



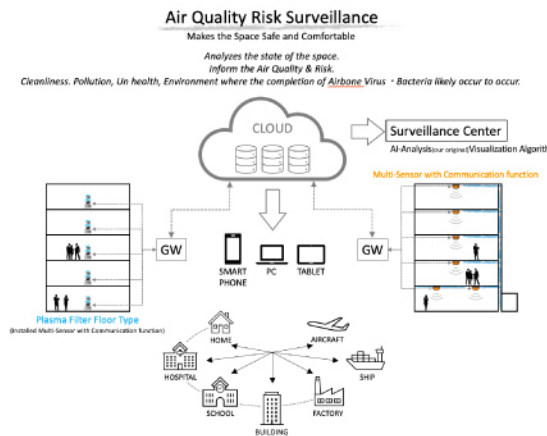
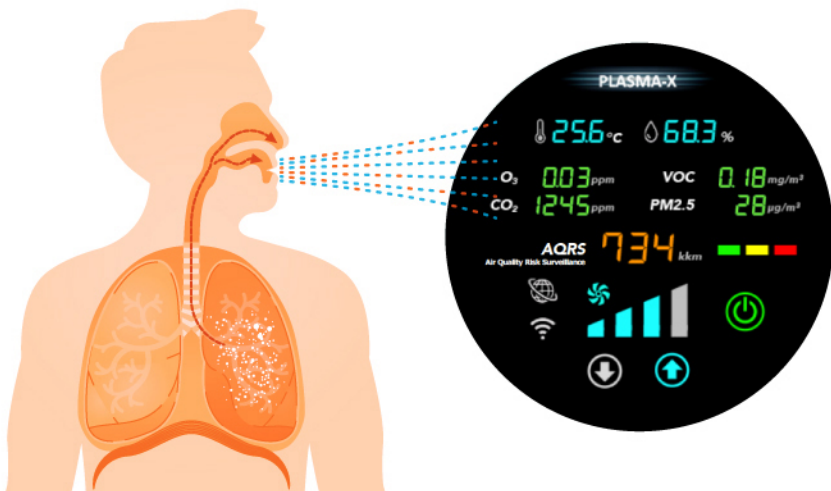
**Air pollution** is not only a global environmental problem but also has an important impact on people's health.



CO<sub>2</sub> CH<sub>4</sub>  
PM2.5  
PM1.0  
N<sub>2</sub>O  
SF<sub>6</sub>

We measure air pollution by our sensing technology "AQRSS".  
It is useful to keep safe space in the facility for 24 hours.  
Cold plasma technology can also recover carbon dioxide that people have exhaled.

## Air Quality Risk Surveillance system





Our cutting-edge cold plasma technology will enable us to preserve a beautiful earth for future generations.



Our COLD PLASMA technology by *Dr. Masahiko Kaneko*  
*Hidetaka Miyazaki*

Alliance partner: Dr. Akitoshi Okino (Tokyo Institute of Technology)

### Corporate information

#### Japan Institute of Future Science Inc

702-3-6-14, Kasumigaseki, Chiyoda-ku, Tokyo 100-0013, JAPAN  
Phone: +81-3-6910-0180

U.S. Department

TELLAPURE, LLC

North America & Middle East sales,  
marketing & distribution



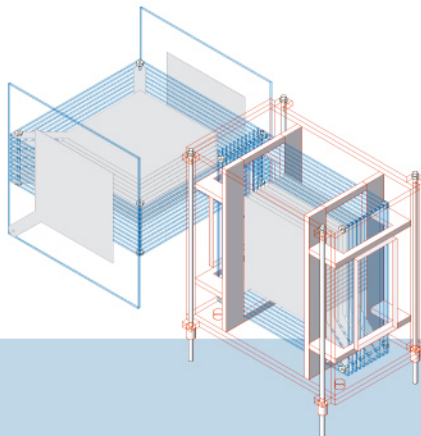
URL: [www.tellapure.com](http://www.tellapure.com)

For more information:

Yukiko ARAI  
Environmental Division  
[arai@jis.tokyo](mailto:arai@jis.tokyo)

<https://jis.tokyo>

<https://sterilizair.jis.tokyo>



CO<sub>2</sub> Decomposition  
COLD PLASMA-FILTER

PLASMA WATER  
AQRSS / PLASMA-X  
microbial fuel generation

Space sterilization system

**SterilizAir®**





CO<sub>2</sub> Decomposition  
**COLD PLASMA-FILTER**  
TECHNOLOGY